

# Wake ElectriConnection

For members of Wake Electric Membership Corporation



"The power to make a difference"

JANUARY 2012

## Members Enjoy Fellowship, Learn Interesting Facts about Electric Utilities at MAC Meetings

NEXT ROUND OF MEMBER ADVISORY COMMITTEE MEETINGS ARE IN FEBRUARY



SIGN UP AND JOIN US!

**W**ake Electric hosted three Member Advisory Committee (MAC) meetings in October, and they were a great success! More than 150 members attended the MAC meetings and listened to Jim Mangum, General Manager and CEO of Wake Electric, discuss the increasing role that natural gas is playing in our electricity generation mix, as well as new and somewhat controversial technologies like horizontal drilling and hydraulic fracturing that are driving the natural gas markets.

Members enjoyed a delicious meal, catered by Cook Shack Catering out of Louisburg, as well as fellowship with one another.

Thirteen members in attendance were the lucky winners of a drawing for a \$25 credit on their next electric bill.

If you are interested in attending one of the next round of MAC meetings on February 13, February 15 or February 16, please visit [www.wemc.com/membermeetings.aspx](http://www.wemc.com/membermeetings.aspx). We hope to see you there!

### Save the Date for Wake Electric's 2012 Annual Meeting

**When:** Friday, March 23

**Time:** Registration—5:30 p.m.  
Business Meeting—7 p.m.

**Location:** Louisburg College  
Auditorium

**To learn more:** Visit  
[www.wemc.com/annualmeeting.aspx](http://www.wemc.com/annualmeeting.aspx).  
We hope to see you there!



 Wake Electric  
Membership Corporation

A Touchstone Energy® Cooperative 

Call to report outages: 919.863.6499 or 800.743.3155  
Regular office hours: M–F, 8 a.m.–5 p.m.  
Telephone hours: M–F, 7 a.m.–6 p.m., 863.6300 or 800.474.6300  
Underground locating service: Call 811  
Dedicated pay-by-phone number: 866.999.4593

# Attention, Students!

## Scholarship Opportunities Available at Wake Electric

### TOUCHSTONE ENERGY SPORTS CAMPS 2012

Wake Electric is providing all-expenses-paid scholarships for female rising sixth through eighth graders to attend the Kellie Harper Basketball Camp at North Carolina State University in Raleigh and male rising sixth through eighth graders to attend the Roy Williams Basketball Camp at UNC in Chapel Hill this summer.

Coaches at both camps will work closely with each camper to develop fundamental skills that will help the young athletes both on and off the court.

Wake Electric will begin accepting applications on Monday, January 2. The deadline to apply is Friday, March 30. Applicants will be judged on their academics, extracurricular activities and accompanying essay.

Students can download an application at [www.wemc.com/basketball.aspx](http://www.wemc.com/basketball.aspx), starting January 2, 2012.

### WAKE ELECTRIC SCHOLARSHIP PROGRAM

One Fred M. Alford College Scholarship for \$2,000 and 16 Touchstone Energy College Scholarships for \$1,250 each. Deadline is Friday, March 30, 2012.

Visit [www.wemc.com/scholarships.aspx](http://www.wemc.com/scholarships.aspx) for more information and to download an application.

### RURAL ELECTRIC YOUTH TOUR

\$1,000 college scholarship, plus a free, all-expenses-paid trip to Washington, D.C. Deadline is Thursday, March 15, 2012. Visit [www.wemc.com/youthtours.aspx](http://www.wemc.com/youthtours.aspx) for more information and to download an application.



*Congratulations to the 2011 Touchstone Energy Sports Camps Winners: Amanda Dean, Daniel Blackmond and William Jacob "Jake" Powell.*

## Bought an Electric Car?

### Let Us Know About It!

Please contact Wake Electric if you have purchased or plan to purchase an electric vehicle that will be charged at a home or business that is served by Wake Electric. We want to continue to accommodate the extra load electric cars place on our system and ensure that no safety issues exist.

Please contact us at (919) 863-6312, (919) 863-6316 or via email at [communications@wemc.com](mailto:communications@wemc.com). We appreciate your help with this matter.



### ENERGY EFFICIENCY TIP

Switch to energy-saving halogen incandescent light bulbs to cut lighting energy use by 25 percent. These bulbs last three times longer than traditional incandescent bulbs and can easily be dimmed. Want to save more? Compact fluorescent lamps (CFLs) and light-emitting diodes (LEDs) cut lighting energy use by at least 75 percent. Learn more at [energysavers.gov](http://energysavers.gov).

*Source: U.S. Department of Energy*



# Wake Electric's "Give Us an A" Program Rewards High-Achieving Students with a \$50 Savings Bond

Wake Electric recently awarded 40 U.S. Savings Bonds to area students who received at least one "A" (or its equivalent) on their report cards. The \$50 savings bond awards were part of a drawing held three times a year at the co-op.

Students in any grade in Durham, Franklin, Granville, Johnston, Nash, Vance and Wake counties are eligible to apply.

Funding for the "Give Us an A" program is made possible by Wake Electric members through the Operation RoundUp program. Members who sign up to participate in the Operation RoundUp program elect to have their monthly electric bill rounded up to the next whole dollar. These pennies collectively add up to major dollars for community programs.

The next "Give Us an A" drawing will be held on January 20, 2012. Because each school district may have a different time for issuing report cards, if a student's entry misses one deadline, the entry will automatically be included in the next drawing.

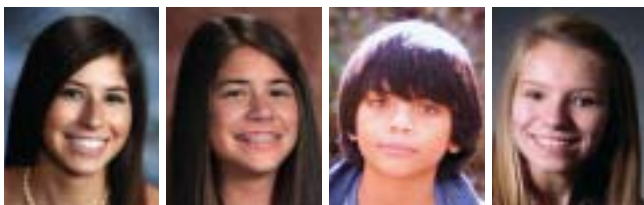
To enter, students should include:

- ★ A copy of the report card with any "A"s highlighted
- ★ Parents' or guardians' names (if applicable)
- ★ Home address
- ★ Email address that is checked regularly
- ★ School attending
- ★ Telephone number

For information on how to enter Wake Electric's next "Give Us an A" drawing, go to [www.wemc.com/giveusana.aspx](http://www.wemc.com/giveusana.aspx).

## "Give Us an A" winners

Name	School
Sydney Averette	Mount Energy Elementary School
Spencer Averette	Mount Energy Elementary School
Julie Baker	North Forest Pines Elementary School
Emily P. Berrier	North Raleigh Christian Academy
Ronald C. Berrier	North Raleigh Christian Academy
Memphis Cameron Bleau	Franklin Academy
Ashton Bryan	Quest Academy
Sarah Marie Bryant	Thales Academy in Wake Forest
Jake Zebulon Clement	GT Magnet Middle School
William Zebulon Clement IV	GT Magnet Middle School
Felisha Crittenden	East Wake Academy
Hunter Dickerson	Heritage Middle School
Orlando Garcia	Bunn High School
Jessica L. Graham	Franklin Academy
Alec C. Heroux	Franklin Academy
Taryn Hoffman	Franklinton High School
Devin Hoffman	Franklinton High School
Tucker Huffine	Endeavor Charter School
Meredith Huffine	Endeavor Charter School
Kailey Hunt	Bunn High School
Paige Iapalucci	Wake Forest-Rolesville High School
Alexandra Iapalucci	Wake Forest-Rolesville High School
Louis Isabella III	Franklinton High School
Erin R. Kaczynski	Franklin Academy
Jacob Lewis	Franklinton High School
Trent Liles	Harris Creek Elementary School
Allie K. Mobley	Franklin Academy
Lauren G. Mobley	Franklin Academy
Emily Orander	Heritage Middle School
Nathaniel Praught	Heritage Middle School
Christen A. Rogers	Franklin Academy
Caitlin M. Rogers	Franklin Academy
Megan E. Rogers	Franklin Academy
Kelsey Selna	Heritage Middle School
Cassidy Sherron	Heritage Middle School
Lauren Smith	Franklin Academy
Bryan Trawick	Heritage Middle School
Emaleigh Tuggle	Heritage Middle School
Isaac Williams	Youngsville Elementary School
Olivia Wilson	Youngsville Elementary School



Congratulations to Paige Iapalucci from Wake Forest-Rolesville High School, Alexandra "Ali" Iapalucci from Wake Forest-Rolesville High School, Ashton Bryan from Quest Academy and Kailey Hunt from Bunn High School for winning a "Give Us an A" savings bond from Wake Electric!

# Wake Electric Honors Grant Winners at Bright Ideas Education Grants Awards Luncheon

**W**ake Electric, along with North Carolina's Touchstone Energy Cooperatives, hosted the ninth annual Touchstone Energy Bright Ideas education grant awards luncheon in November at The Dail Club inside Carter Finley Stadium in Raleigh.

During the luncheon, Wake Electric honored 24 area teachers with Bright Ideas education grants and awarded more than \$50,000 in grant monies.

Keynote speaker Kellie Harper, head coach of the women's basketball team at North Carolina State University, shared personal stories of her path to success, from the mentors and lessons of her childhood to her experience coaching conference championship-winning teams and working to inspire dedication and drive in her players.

Wake Electric awards up to \$3,000 per grant to local teachers for innovative classroom-based projects. Since 1994, the Bright Ideas education grant program as a whole has awarded more than \$7.3 million to Tar Heel educators. The funds have underwritten more than 7,000 projects to improve classroom instruction and encourage creative teaching initiatives, benefiting more than 1.3 million students throughout the state.

Wake Electric's Bright Ideas grant program alone has awarded more than \$580,000 to area educators since 1994. To learn more about the grant program, visit [www.ncbrightideas.com](http://www.ncbrightideas.com) or Wake Electric's website at [www.wemc.com](http://www.wemc.com).

Bright Ideas, sponsored by North Carolina's electric cooperatives (which includes Wake Electric), strives to improve education in North Carolina's classrooms by awarding grants to teachers in grades K-12 for innovative, classroom-based projects that would not otherwise be funded.



*N.C. State University women's basketball head coach Kellie Harper entertained and motivated the Bright Ideas grant winners during the luncheon with her keynote address.*



*Phil Price, chief operating officer and assistant general manager of Wake Electric (far left), Bobbie Lequire from CG Credle Elementary School (middle left), Renee Gorby from JF Webb High School (middle right) and Fred Keller, manager of member and energy services of Wake Electric (far right) at the 2011 Bright Ideas Education Grants Award Celebration, sponsored by Wake Electric and North Carolina's Touchstone Energy cooperatives.*

Free Pickup.  
Free Recycling.  
Cool Savings.

Get \$50 for  
your old  
fridge.

To schedule your free pickup  
call **877.341.2310**  
or visit **www.wemc.com**



**Fridge & Freezer  
Farewell**

Brought to you by:



**Wake Electric  
Membership Corporation**

\*Some restrictions apply.

## Grant winners for Wake Electric in 2011 include:

Bright Ideas Grant Winner	School	Name of Grant	County	Amount Awarded
Cherry Jackson	Lockhart Elementary	School of Ember	Wake	\$1,481.44
Karen Waller	Timber Drive Elementary	GA-GA for Global Awareness	Wake	\$2,750
Bobbie Lequire	CG Credle Elementary School	Freedom Crafters: The Hidden Story	Granville	\$2,589.22
Angela Stephenson	Leesville Road High School	Building Successful Teen Habits	Wake	\$945.04
Brian Mannette	Heritage Middle School	Heritage Students Against Bullying	Wake	\$2,717.45
Tracy Britto	Archer Lodge Middle School	Today on Wall Street	Johnston	\$2,945
Beth Maynor	Wendell Elementary School	Communication at Its Best: Speech Therapy with an iPad	Wake	\$1,528.87
Patsy Hester	East Cary Middle School	Robots in the Math Classroom	Wake	\$3,000
Jeannie Ransone	Sanderson High School	Save A Life!	Wake	\$2,278.89
Victoria Bradsher	Vance Charter School	Algebra - the Language of Science	Vance	\$588.07
Renee Gorby	JF Webb High School	Our Food, Our Choices, Our Future	Granville	\$2,526.85
Molly Bostic	Heritage High School	Integrating the Environment with Handheld Technology	Wake	\$2,748
Seth Clark	Holly Springs High School	Lovin' Languages	Wake	\$2,899.32
Julie Blas	Lincoln Heights Elementary School	Expanding Expression	Wake	\$229
Elizabeth Koch	Martin Middle School	Seeing is Learning	Wake	\$1,326.85
Sally Walton	Holly Ridge Elementary School	Guys Read	Wake	\$3,000
Cynthia Linton	Centennial Campus	Around the World Short Stories	Wake	\$2,351
Jennifer Whipple-Rivera	Millbrook High School	Let's Share Strategies	Wake	\$1,499
Julie Schmidt	Ballentine Elementary School	Lights, Camera, Glow!	Wake	\$2,335.95
Michelle Conti	Brassfield Elementary School	1-to-1 iPads in the Classroom	Wake	\$2994
Bonnie Galarde	Governor Morehead School for the Visually Impaired	Let There Be Light	Wake	\$850.80
Kelly Lister	Wendell Middle School	HERE (Helping Everyone Receive an Education)	Wake	\$872.20
Lynn Wallace	Millbrook High School	Green Solar Village	Wake	\$3,000
Danielle Clark	Holly Ridge Elementary School	Preparing for a Technological Future	Wake	\$2,762.69

## Wake Electric's New Pay-by-Phone Number

Just a friendly reminder that Wake Electric now has a dedicated pay-by-phone number option for bill payment. The number for this new service is (866) 999-4593. This convenient new option allows members to check the status of their account, make a payment, create or update PIN numbers and also update phone numbers through an automated phone system.

## Holiday Closings

Wake Electric's offices will be closed on January 2, 2012, in honor of the New Year. For emergencies, please contact us at (800) 474-6300 or (919) 863-6300.



# Wake Electric Annual Meeting Requirements

Excerpts from Wake Electric's bylaws relating to voting, proxies, director qualifications, districts and nominations are listed below for the Annual Meeting scheduled for March 23, 2012. A complete copy of the bylaws is available upon request.

## **ARTICLE III-SECTION 3.06 VOTING.**

Each member who is not in a status of suspension...shall be entitled to one vote...Voting by members other than members who are natural persons shall be allowed upon the presentation...of satisfactory evidence entitling the person... to vote. A person entitled to cast the vote of such an entity, who is also himself a member, may vote his own membership as well as that of the entity here presents. At all meetings of the members at which a quorum is present, all questions shall be decided by a majority of the members voting there-on in person or by proxy, except as otherwise provided.

## **ARTICLE III-SECTION 3.07 PROXIES.**

At any meeting of the members any member may vote by proxy if such proxy (a) is registered before or at the time of the meeting (b) is executed by the member in writing and designates the holder thereof...which holder(s) shall be the member's spouse, an adult close relative (18 years or older) residing in the same household as the member, or another member and (c) specifies the particular meeting...no person shall vote as proxy for more than five (5) members...Whenever a member is absent from a meeting...but whose spouse attends such meeting, such spouse shall be deemed to hold, and may exercise and vote unless such member has given a written proxy to some other person.

## **ARTICLE IV-SECTION 4.01 NUMBER AND GENERAL POWERS.**

The business and affairs of the Cooperative shall be managed by a Board consisting of nine (9) directors, which shall exercise all of the powers of the Cooperative except such as are by law or by the Cooperative's Certificate of Incorporation or Bylaws conferred upon or reserved to the members.

## **ARTICLE IV-SECTION 4.02 QUALIFICATIONS.**

Any member shall be eligible to become or remain a director of the Cooperative save and except those who: (a) While serving on the Board or during the ten (10) years preceding his or her nomination thereto shall have been finally adjudged to be guilty of a felony; or (b) Are or become a close relative of an incumbent director or of an employee of the

Cooperative, PROVIDED, no incumbent director shall lose eligibility to remain a director or to be re-elected as a director if he or she becomes a close relative of another incumbent director or of a Cooperative employee because of marriage to which he or she was not a party; or (c) Have not continuously been, for at least two (2) years prior to his or her nomination, or who have ceased after his or her election to be, a member in good standing of the Cooperative, receiving service there from at his or her primary residential abode in the Directorate District from which he or she is elected, PROVIDED, that the operating or chief executive of any member which is not a natural person, such as a corporation, church, etc., or his or her designee, shall, notwithstanding that he or she does not receive service from the Cooperative at his

or her primary residential abode, be eligible to become a director, from the Directorate District in which such member is located, if he (or she) or such designee (1) is in substantial permanent occupancy, direction or use of the premises served by the Cooperative, and (2) is a permanent and year-round resident within or in close proximity to an area served by the Cooperative, BUT PROVIDED FURTHER, that no more than one (1) person may serve on the Board of Directors at the same time); or (d) Are removed by a majority vote of the remaining directors, in accordance with the procedures hereinafter set forth; or (e) Are not at least eighteen (18) years old; or (f) Are or within the past ten years have been employed by the Cooperative; (g) Are or within the past ten years have been employed by any subsidiary of the Cooperative; (h) Are or within the past five years have been employed by any cooperative, corporation, limited liability company or other organization or legal entity in which the Cooperative is a member; (i) Are or within the past five years have been employed by any cooperative, corporation, limited liability company or other organization or legal entity in which the Cooperative is a stockholder owning or in control of two percent or more of the outstanding interest in such entity; or (j) Are or within the past ten years have been in any way: (1) employed by or hold a substantial financial interest in a competing enterprise, or (2) a vendor selling supplies to the Cooperative; (k) Are or within the past ten years have been in any way employed by or hold a substantial financial interest in a business selling electric energy to the Cooperative or a business substantially engaged in selling

electrical or plumbing appliances, fixtures, supplies or wiring primarily to the members of the Cooperative. (l) Are or within the past five years have been employed by, or worked primarily as a consultant to, any other electric, telephone, natural gas or other utility company, including generation companies and power marketers, or any trade association or governmental agency or entity which deals with utility services including, but not limited to, other electric membership corporations, investor-owned utilities or municipally-owned utilities.

**ARTICLE IV-SECTION 4.05  
DIRECTORATE DISTRICTS.**

District One is an at-large district that includes the Cooperative's entire service area.

District Two is that portion of the Cooperative's service area located in Wake County east of N.C. Highway 50; north of the Neuse River; west of U.S. Highway 1 until it intersects with U.S. Highway 1-A south of Wake Forest, then west of U.S. 1-A.

District Three is that portion of the Cooperative's service area located in Franklin, Granville and Vance and Counties north of N.C. Highway 56.

District Four is that portion of the Cooperative's service area located in Durham, Granville and Wake Counties south of N.C. Highway 56; west of N.C. Highway 50.

District Five is an at-large district that includes the Cooperative's entire service area.

District Six is that portion of the Cooperative's service area located in Wake and Franklin Counties east of U.S. Highway 1 until it intersects with U.S. Highway 1-A south of Wake Forest and then east of U.S. Highway 1-A; south of SR 1100; west of U.S. Highway 401; and north of the Neuse River.

District Seven is that portion of the Cooperative's service area located in Granville and Franklin Counties east of N.C. Highway 50; south of N.C. Highway 56; and west of Highway 1-A; north of N.C. State Road 1100; and north of N.C. Highway 98.

District Eight is that portion of the Cooperative's service area located in Wake and Franklin Counties north of the Neuse River; east of U.S. Highway 401; south of N.C. State Road 1100; and south of N.C. Highway 98.

District Nine is that portion of the Cooperative's service area located in Johnston and Nash Counties.


**SECTION 4.06 NOMINATIONS**

The Board of Directors shall appoint the Committee on Nominations and resolutions at least 90 days prior to the Annual Meeting. The Committee on Nominations, consisting of nine (9) members of the Cooperative, who are not existing Cooperative employees, agents, officers, directors or known candidates for director, who are not close relatives (as hereinafter defined) or members of the same household, thereof. The General Manager shall convene the Committee and it shall be the duty of the Committee to meet and prepare and post at the principal office of the cooperative not less than forty-five (45) days prior to the meeting a list of nominations for directors to be elected, listing separately the nominee(s) with respect to each Directorate District from or with respect to which a director must, pursuant to this Article, be elected at the meeting. The Committee may include as many nominees for any director to be elected with respect to any Directorate District as it deems desirable...Any fifteen (15) or more members of the cooperative, acting together, may make additional

nominations in writing over their signatures, listing their nominee(s) in like manner, not less than thirty-five (35) days prior to the meeting, and the Secretary shall post such nominations at the same place where the list of nominations made by the Committee is posted.

**SECTION 4.07. VOTING FOR DIRECTORS.**

In the election of directors, each member shall be entitled to cast the number of votes (but not cumulatively) which corresponds to the total number of directors to be elected, but no member may vote for more nominees than the number of directors that are to be elected from or with respect to any particular Directorate District.



*Published monthly by Wake Electric*

P.O. Box 1229, 414 East Wait Avenue,  
Wake Forest, NC 27588, [www.wemc.com](http://www.wemc.com)

---

**BOARD OF DIRECTORS**

<b>Roy Ed Jones, Jr.</b> President	<b>Bill Bailey</b>
<b>Reuben Matthews</b> Vice President	<b>Mike Dickerson</b>
<b>Joe Eddins</b> Secretary	<b>Joe Hilburn, Jr.</b>
<b>Howard Conyers</b> Treasurer	<b>Suzy Morgan</b>
	<b>Allen Nelson</b>

---

**PERSONNEL**

**Jim Mangum**  
General Manager & CEO

**Phil Price**  
Chief Operating Officer &  
Ass't. General Manager

**Don Bowman**  
Manager, Engineering

**Fred Keller**  
Manager, Member & Energy Services

**Scott Poole**  
Manager, Customer Service

**Suzanne Shoaf Ward**  
Public Relations/Communications  
Specialist and Editor

# Wake Electric Awards 3rd Quarter Grants to Deserving Nonprofit Organizations



Wake Electric awarded more than \$9,300 in grant monies during the 3rd quarter of 2011 to deserving nonprofit organizations located in counties served by the co-op. These grants were made available through the Operation RoundUp program.

Nonprofit agencies located in counties that Wake Electric serves, which include Durham, Franklin, Granville, Johnston, Nash, Vance and Wake counties, are eligible to apply. The agency does not have to be a member of Wake Electric.

Grants are open to all project and subject areas that

enhance economic infrastructure and job creation, promote service or charitable organizations, and meet emergency needs of individuals within the service area of Wake Electric. For more information, please visit [www.wemc.com/oproundup.aspx](http://www.wemc.com/oproundup.aspx).

Each quarter, the board of directors for the program's administrative body, the Wake Electric Foundation board, meets to determine who will be awarded funds.

The funds for Operation RoundUp grants come from voluntary contributions from Wake Electric members.

## The 3rd quarter 2011 Operation RoundUp grant winners are:

Name of Nonprofit Organization	Amount Awarded	County where Nonprofit is Located	Info about Grant
A Blessing, Inc.	\$1,000	Franklin County	Food supply to help feed needy families
Bridges of Hope Ministry, Inc.	\$1,000	Franklin County	Sponsor 25 children for the obese program
Care & Share of Franklin County	\$1,000	Franklin County	Emergency Food for needy families
Changing A Generation Outreach	\$1,000	Durham County	Food supplies for needy children in low-income homes
ChurchNet Foundation, Inc.	\$2,000	Wake County	Emergency needs for local residents
Franklin-Vance-Warren Opportunity, Inc.	\$500	Vance County	Monies for purchasing supplies for resource center
North Raleigh Ministries	\$1,000	Wake County	Monies to purchase food for holiday dinner baskets
Special Olympics of North Carolina	\$1,000	Wake, Durham, Franklin, Granville, Johnston, Nash and Vance counties	Monies for Olympic Games
Youngsville Elementary	\$800	Franklin County	Storyteller for schools arts program

## Wake Electric Asks Members to Help Prevent Copper Theft

Rising metal prices are causing a surge in copper theft. Copper wire is a primary component of electrical distribution lines and substations, like those owned by Wake

Electric. Removing it causes power outages, increases expenses and diminishes service reliability.

Thieves climb utility poles and scale fences to steal it. Although

its prices have increased drastically, most thieves are only able to steal less than \$100 worth of copper, and they risk their lives to do so.

"To a thief, stealing copper may seem like a quick way to make some cash," said Fred Keller, Manager of Member and Energy Services. "But it's illegal, it's costly, and it's not worth anyone's life." In 2010, metal theft-related deaths occurred in North Carolina, West Virginia, Illinois and Ohio. In North Carolina, it is

illegal for anyone without the proper paperwork to transport or possess more than 25 pounds of copper.

To protect the public, Wake Electric's substations have warning signs and are secured with high fences. If you notice anything unusual, like an open substation gate, open equipment or hanging wire, call us immediately at (800) 474-6300. If you see anyone other than utility personnel near electrical facilities, call the police.

